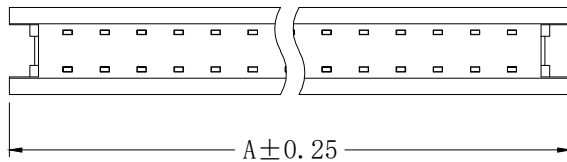
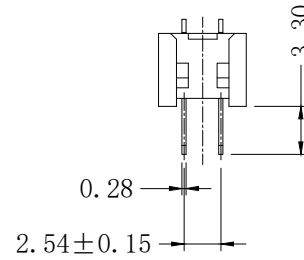
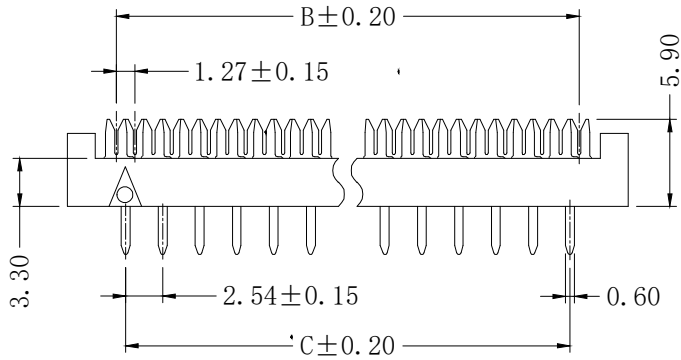
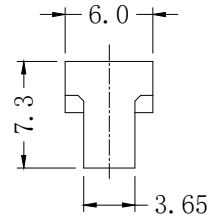
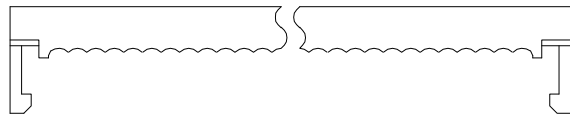
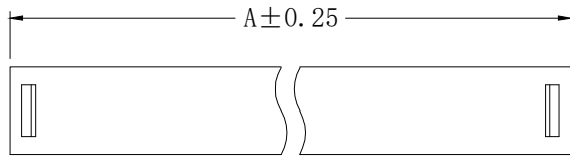


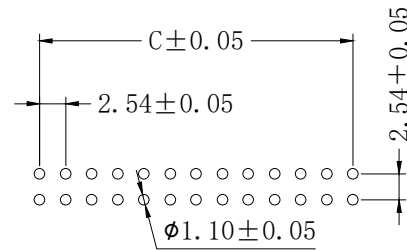
版次	变更内容	审核	日期



技术参数: SPECIFICATIONS

额定电流 (Current Rating): 1A
 绝缘电阻 (Insulation Resistance): 1000MΩ Min. at DC 500V
 接触电阻 (Contact Resistance): 20mΩ Max.
 额定电压 (Dielectric Withstanding Voltage): AC 500V
 工作温度 (Operating Temperature): -40°C ~ +105°C
 接触材料 (Contact Material): 黄铜 (Brass)
 塑胶材料 (Insulator Material): PBT, UL 94V-0
 接触电镀 (Contact Plating): 镀金 Gold Flash

Pos.	Dim A	Dim B	Dim C
6	13.07	6.35	5.08
8	15.61	8.89	7.62
10	18.15	11.43	10.16
12	20.69	13.97	12.70
14	23.23	16.51	15.24
16	25.77	19.05	17.78
18	28.31	21.59	20.32
20	30.85	24.13	22.86
24	35.93	29.21	27.94
26	38.47	31.75	30.48
28	41.01	34.29	33.02
30	43.55	36.83	35.56
34	48.63	41.91	40.64
36	51.17	44.45	43.18
40	56.25	49.53	48.26
50	68.95	62.23	60.96
60	81.65	74.93	73.66
64	86.73	80.01	78.74



RECOMMEND PCB LAYOUT

公差:	版次:	A	上海宗进电子科技有限公司		
	比例:		Shanghai Zong Jin Electron Technology Co.LTD		
. X ±0.35	单位:	mm	型号:	601-xxP	签名
. XX ±0.25	页码:	1/1	描述:	2.54压线公头	日期
. XXX ±2°	图号:				
LNLGB					